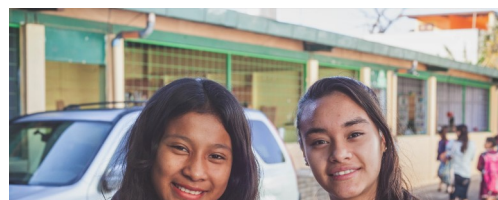




## Ministry Prospectus November 2021

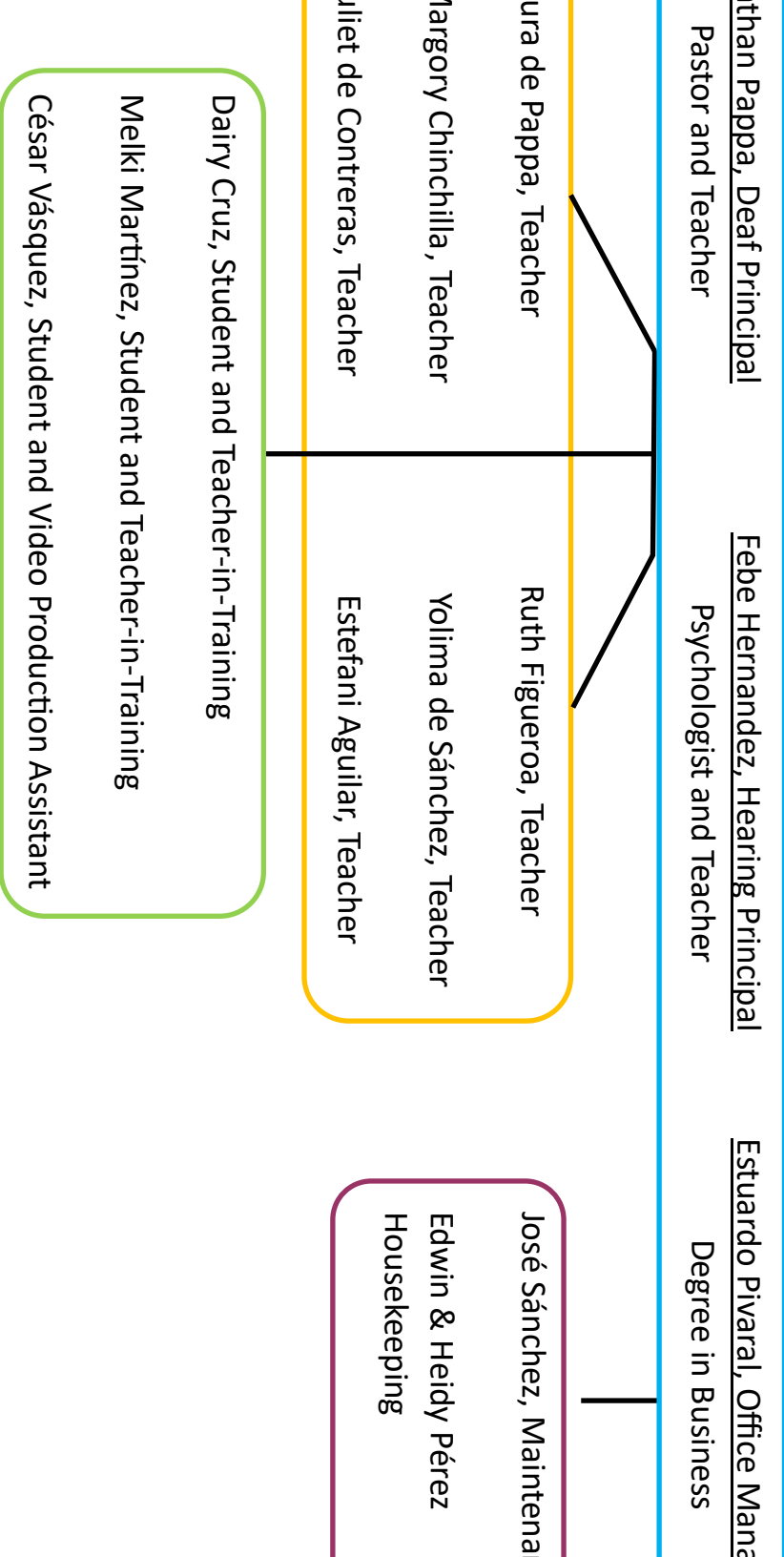


Board of Directors

<u>Bob Royster, President</u>	<u>Greg Summerville, Vice President</u>	<u>Carl Ehmann, Treasurer</u>
Retired Technical Writer	General Contractor/Founder Pastor and Teacher	Attorney-Retired
<u>Nette Summerville, Member</u>	<u>Dr. Nicole Thorn, Member</u>	<u>Nancy Royster, Member</u>
RN /Founder	Professional Counselor	English Teacher
		<u>Kathy Reese, Member</u> Marriage and Family Therapist

Guatemala Staff

Elvis Aguirre, Guatemala Administrator  
Pastor and Teacher



family that served God in one way or another; raising eight children took most of our time, but we did manage to teach Sunday School and our church's Wednesday night children's program. Many years ago, we got involved through our church in some construction projects for a deaf school in Mexico called Rancho Sordo Mundo. Wow, was that eye opening! In serving the deaf students at the school there at RSM, we learned several key things:

- How exciting it was to teach deaf children.
- Deaf culture is a culture all its own.
- The need is so great.
- To serve the Deaf, one had to learn sign language.

Then we were asked to join other missionaries going to Guatemala. As it happened, they didn't end up going and we did. It reminds us of a story we read to our children many years ago about Gladys Aylward, the missionary to China. She once said:

***"I wasn't God's first choice for what I've done in China...I don't know who it was...It must have been a man...a well-educated man. I don't know what happened. Perhaps he died. Perhaps he wasn't willing..,and God looked down...and saw Gladys Aylward...and God said, 'Well, she's willing.'"***

We didn't have the education or languages...but we were willing.

The blessings have far out numbered the challenges. After 13 years serving the Deaf of Guatemala in several locations, we believe it is time to move the ministry to a more permanent location where we will be able to expand the vision of reaching the Deaf for Jesus Christ. The following pages will give you some details of the project. We hope that you will pray for us and even give financially. Please feel free to contact us with any questions.

May God Bless you.

In His service,

Greg and Jeanette Summerville

000 647 8577







Patio and bathrooms



Church/Multipurpose Room



Carpentry Shop



School Office



Classrooms



Classroom and Video Production



2011—Incorporated GDM as a 501 (c)(3).

2012—Moved to the city of Jutiapa and started a school/church with Jonathan Pappa. 8 students in school.

2013—Elvis Aguirre joined our staff. 13 students in school.

2014—2017—11 staff members on the team. School attendance grew to 33 students.

2018—Moved the ministry to El Progreso, Dept. of Jutiapa. Added two more teachers. 38 students in school.

2019—44 students in school.

2020—Started the year off with 50 students and then COVID-19 hit.

2021—Purchased 40 acres of land

2022—Started construction on the School/Church and Workshop/Apartments

## What's in store for GDM



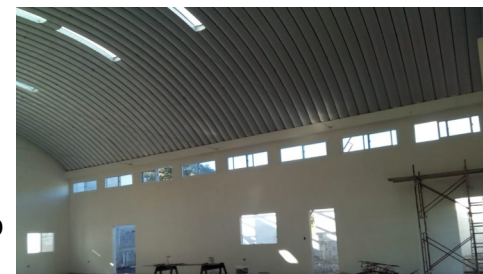
The country is slowly getting back to a pre-pandemic normalcy. School for 2022 was one day per week for the students. The plan is to be back to the normal three day per week schedule when school starts in February of 2023. Construction on the new church/school and workshop/apartments started in January of 2022. We hope to finish construction on this first phase in 2023. The rains in 2022 slowed us down considerably with over 12 feet of water.

The ministry is still getting a lot of inquiries into our school program from families with deaf children that live far enough away that daily commuting is impossible. The vision has always been to provide a residential school where the students can stay for the school week and then return home on the weekends.

And of course, if we have a residential school, why not a home for orphaned deaf children? Currently, the government here in Guatemala is not able to accommodate deaf children either in school or in orphanages for the Deaf. It is time to change that, especially since there are reported to be nearly one million deaf people in Guatemala. Phase two will provide for a residential school and orphanage.

With the purchase of this property we will be able to grow food, raise chickens, and teach the Deaf to do so as well.

GDM will continue to provide vocational classes for our older students, counseling and classes for the parents, community sign language classes, church services, and fellowship for the Deaf. Providing a safe place is essential both physically and emotionally for the deaf community here in Guatemala. It has been difficult for deaf people to connect and fellowship with one another. Lack of communication and not knowing what is going





- Purchase the nearly 40 acre parcel described in the following pages.
- Construct the large 4,560 sq. ft. church/school and the 2,880 sq. ft. workshop/apartment building.
- Expand the school's capacity to 120 students using the multipurpose room with classroom dividers.
- Open a residential school for 10 deaf children.
- Expand the Vocational Program to include deaf adults from the community.
  - ♦ Carpentry
  - ♦ Welding
  - ♦ Cooking/Baking
  - ♦ Sewing
- Provide jobs for the deaf community.
  - ♦ Teaching positions
  - ♦ Agriculture
  - ♦ Maintenance
  - ♦ Servers for weddings and celebrations

## Income-Earning Opportunities for Phase One

- Venue for weddings, birthday parties and celebrations
- Furniture sales
- Bakery
- Raising and selling chickens and eggs
- Cash crops
  - ♦ Strawberries
  - ♦ Avocados
  - ♦ Corn
  - ♦ Beans



Steel studs and drywall	\$ 6,000.00
Inside wiring and fixtures	6,000.00
Finish plumbing	6,500.00
Doors, frames and hardware	3,200.00
Floor tile	15,000.00
Kit. cabinets & counters	6,000.00
Offgrid solar system	30,000.00
Paint	1,200.00
Refrigerators	1,200.00
Entrance/Driveway	6,000.00
Landscaping	1,500.00
Roll up doors for shop	1,500.00
Steel trusses, plywood & stairs	4,000.00
Retaining walls	7,000.00
<b>Total</b>	<b>\$ 95,100.00</b>

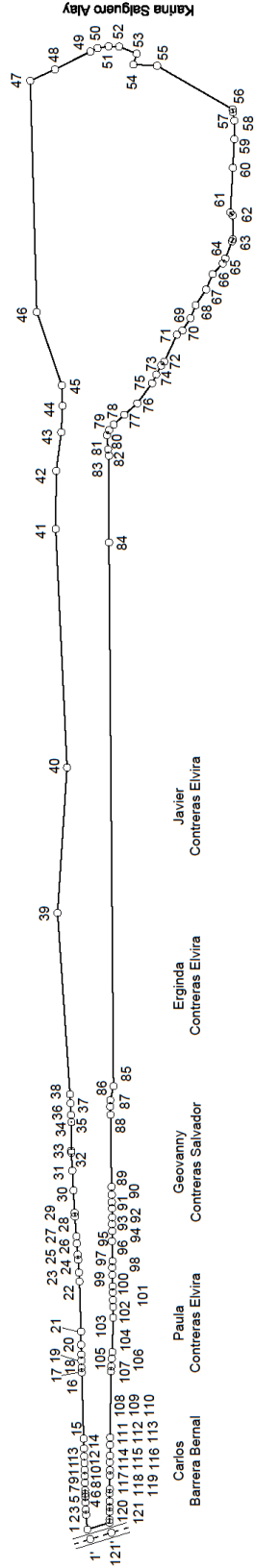


## Current photos of church and workshop/apartments





Jorge López Castellanos



ESTACIÓN	P. O.	ASIMUT	DISTANCIA (m)
1	2	84° 52' 31"	16.05
2	3	89° 52' 54"	1.40
3	4	89° 52' 34"	4.53
4	5	87° 27' 53"	9.09
5	6	89° 04' 22"	5.74
6	7	89° 06' 50"	3.90
7	8	89° 06' 50"	4.38
8	9	87° 44' 26"	9.15
9	10	89° 32' 27"	8.23
10	11	89° 04' 43"	7.33
11	12	89° 04' 43"	8.05
12	13	89° 04' 43"	8.35
13	14	89° 24' 47"	9.73
14	15	89° 24' 47"	8.18
15	16	89° 24' 47"	8.18
16	17	89° 25' 00"	5.65
17	18	89° 06' 40"	9.04
18	19	89° 26' 24"	7.35
19	20	89° 43' 37"	12.11
20	21	89° 53' 29"	16.37

Carlos Barrera Benal

Paula Contreras Elvira

Geovanny Contreras Salvador

Eriginda Contreras Elvira

Javier Contreras Elvira

ESTACIÓN	P. O.	ASIMUT	DISTANCIA (m)
21	22	89° 15' 18"	6.51
22	23	89° 38' 15"	11.60
23	24	89° 09' 43"	15.51
24	25	89° 38' 51"	8.40
25	26	89° 09' 01"	13.84
26	27	89° 52' 14"	5.74
27	28	89° 52' 25"	24.57
28	29	89° 45' 38"	4.64
29	30	89° 15' 41"	27.50
30	31	89° 45' 14"	24.36
31	32	87° 52' 49"	22.06
32	33	87° 52' 34"	3.30
33	34	89° 15' 20"	35.15
34	35	89° 15' 22"	9.18
35	36	89° 14' 41"	8.54
36	37	87° 17' 50"	14.48
37	38	89° 06' 50"	11.36
38	39	89° 04' 04"	223.59
39	40	89° 44' 35"	179.13
40	41	87° 16' 02"	203.56

ESTACIÓN	P. O.	ASIMUT	DISTANCIA (m)
41	42	89° 31' 40"	71.53
42	43	89° 30' 40"	47.74
43	44	89° 42' 40"	52.71
44	45	89° 14' 40"	65.52
45	46	87° 12' 40"	65.52
46	47	89° 32' 41"	284.44
47	48	100° 15' 40"	33.36
48	49	100° 13' 34"	48.82
49	50	104° 39' 20"	8.62
50	51	170° 22' 40"	13.79
51	52	181° 55' 05"	13.05
52	53	200° 00' 00"	23.00
53	54	200° 56' 10"	13.62
54	55	183° 02' 34"	28.01
55	56	200° 56' 40"	107.04
56	57	200° 52' 50"	3.73
57	58	201° 31' 34"	15.49
58	59	200° 55' 30"	22.27
59	60	237° 06' 30"	35.27
60	61	237° 16' 00"	55.28

ESTACIÓN	P. O.	ASIMUT	DISTANCIA (m)
121	1	342° 50' 00"	28.38

Terreno Comunal

ESTACIÓN	P. O.	DISTANCIA (m)
1	E	13.00
121	E	12.00

INFORMACIÓN PARA DISEÑO DE VÍA

Elaborado por:



4a. Calle 5-11 zona 3, Jutiapa  
Tel. 5616 2006

PLANO DE FINCA NUEVA POR TITULACIÓN			
Finca madre No.	Folio	Urbano	De
NATURALLEZA DE LA FINCA:	Rústica	ESCALA:	12:500
UBICACIÓN:	Managua, El Progreso	Departamento:	Jutiapa
FECHA:	11/10/2021		
ÁREA:	159,429.74 m <sup>2</sup> ó 22 Mc con 8.143.96 vrs <sup>2</sup>		
NOMBRE DE LA FINCA NUEVA:	Sin nombre		
DIRECCIÓN DE LA FINCA NUEVA:	Aldea El Pino		
PROPIETARIO:	GUATEMALA DEAF MINISTRIES, INC.		
Ronald Alberto Contreras Lucero Ingeniero Civil Colegiado No. 1,4,662			



## Google Earth View



Construct the following:

- Family housing for missionaries, includes residential housing
- Soccer field with lighting
- Gym with basketball court
- Swimming pool
- Six guest cabins sleeping 10 guests each
- Driveways and landscaping
- Health center



## Income-Earning Opportunities for Phase Two

- Renting out the soccer field
- Renting out the gym
- Renting out the facilities for church camps
- Selling snacks, beverages, smoothies, and sandwiches
- Chicken farm for selling meat and eggs



**financially.**



Donations can be given through



Visit our website at [www.guatemaladeafministries.com](http://www.guatemaladeafministries.com).

Checks can be mailed to:

**Guatemala Deaf Ministries  
PO Box 809  
Twin Peaks, CA 92391**

